

Close-up view.

Details that make the difference.



Profile.

Ultra-thin: the main body of TAB is just 2.5 cm thick. And thanks to the fixing bracket, it is easily applied to the wall.

4,3"

Colour display.

Visual performance in a 4.3" display offering high definition, colour images of the outside.



Appearance.

TAB is available in white or black: both versions are finished with a special glossy effect typical of today's ultra-modern technology.





Capacitive keyboard.

TAB is the first monitor to have buttons and controls flush with the surface. There is no extra bulk, in line with the minimal design of the appliance as a whole. 8 functions, 4 of which are standard and 4 programmable for intercom calls or auxiliary services.



Accessibility.

TAB has an internal coil which allows hearing aid wearers to use the device. Plus, the keyboard is back-lit: each icon lights up if the corresponding function is activated.



Ringtones.

There are 10 different pre-set melodies in the TAB device memory: simply select your favourite and adjust the volume according to your requirements and the application contexts.

Tab series

TAB series surface mounting video entryphone

Monitor made of thermoplastic material with handset and 4.3" LCD colour display. Equipped with keypad for the video door entry functions: talk/listen, door lock release, self-start, auxiliary services (stair lighting), ringtone muting and 4 programmable additional buttons that can execute up to 4 auxiliary functions or intercommunicating calls.

It is possible to control brightness, ringtone volume, ringtone muting when "User Away" function is activated and ringtone type selection. Facility of selecting different ringtones for calls made from different points, e.g.: external entrance panel, landing call, intercom call.

Signalling of "Door/gate open" and "Unanswered calls" (up to 4 calls with monitor in ringtone muted mode).

The monitor features a hearing aid function as standard.

Conformity to Standards

EMC directive

Main specifications

- Power supply: Due Fili Plus Bus.
- 4.3" LCD display.
- Monitor in ABS casing with gloss finish to front panel.
- Soft touch capacitive keypad with backlit symbols (during operation).
- Electronic ringtone: with diversification between 10 different tunes for entrance panel calls, intercom calls and landing calls.
- Input for landing call.
- Mini-USB connector for programming from PC.
- Designed for surface mounting with back plate either directly to the wall or to a recessed back box (can be fixed with masonry plugs, or screwed to a 3-module rectangular back box or a Ø 60 mm round back box).
- Dimensions of monitor with handset hung up: 160x180x45 mm.

Technical data

Inputs

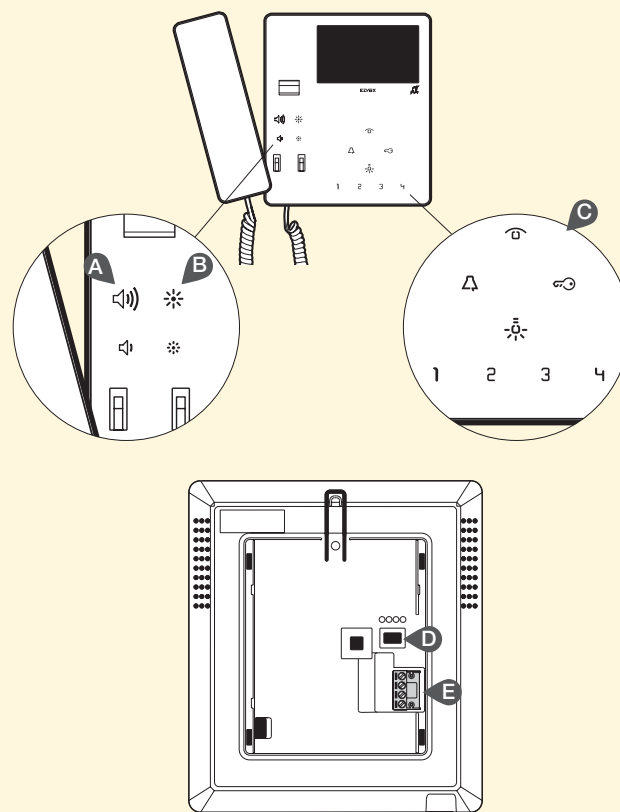
power supply from bus	28 Vdc nominal
current draw in stand-by	10 mA
max current draw in operation	180 mA
operating temperature	0 °C to +40 °C

Soft-touch keypad and luminous indicators

	Self-start button.
	Ringtone mute button and indication: - incoming call (from external entrance panel or intercom device) – blinking light. - ringtone muted – light permanently on. - calls made from entrance panel with ringtone muted – light permanently on and blinking every 10s.
	Lock release button. - light permanently on indicates door open.
	Auxiliary 1 (Stair light): assigned to auxiliary service.
1 2 3 4	Programmable buttons for activating auxiliary services or intercom calls.

Controls and connections

- Side volume control.
- Brightness control on side.
- Touch-sensitive keypad.
- Mini-USB connector.
- Terminal block on fixing plate for connecting the monitor: to the Due Fili Plus system and for connection to an external button for landing calls.



Tab series

Surface mounting video entryphone

7549	Tab surface mounting video entryphone for Due Fili Plus system with 4.3" colour display, handset, loudspeaker for electronic calls, capacitive keypad for interphone functions and intercom calls, facility for hard of hearing function, bracket for fixing in round or rectangular mounting box, white
7549/04	As above, black



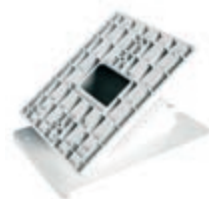
7549
white



7549/04
black

Accessories

753A	Table mounting box for Tab series video entryphones and interphones, white
753A/04	As above, black
753B	Interconnection stud for desktop box, screw terminals, socket outlet RJ45
753S	8 module support (4+4) for surface mounting of Tab 7549 and 7529 video entryphone, with screws for Vimar V71318, V71718 boxes



753A
white



753B



753S